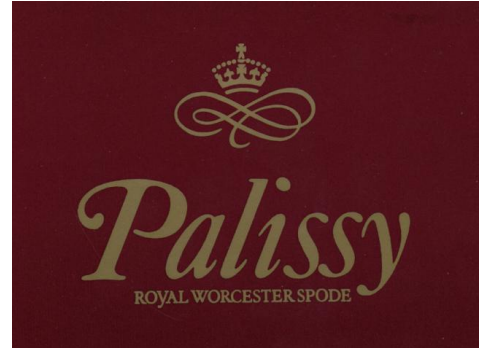


Palissy Pottery

Albert E.Jones Ltd. of Garfield works, Longton Staffordshire, manufactured earthenware from c.1908 to 1946 under the trade name of Palissy Pottery. The two most successful tableware designs they made were,

Avon Scenes, a blue and white printed pattern based on an English design from the early 19th century.

Game Series, a brown printed pattern with hand coloured centres of ducks, pheasants and grouse. The design is typical of the Edwardian period when wealthy families included a game course in the evening meal and purchased tableware specifically for serving the game dishes.(They also had special fish services for the fish course of the meal).

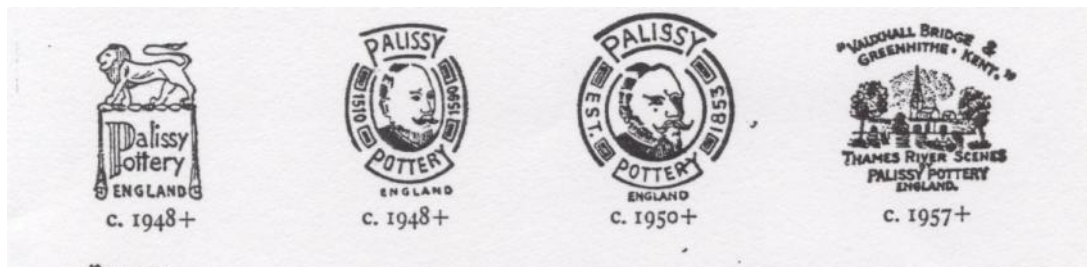


Printed or impressed mark 1936 - 1941

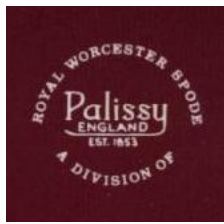
Printed mark 1936 – 1941

Printed mark from 1937 – 1946 and also used later.

In 1946 A.E.Jones changed the name of the company to Palissy Pottery Ltd and moved to Chancery Lane, Longton. Some marks included the name of the pattern eg.Thames River Scenes or Dutch Windmill.



In 1958 Palissy Pottery Ltd. was bought by the Worcester Royal Porcelain Company. Various markings were used, but the words were not included in the factory mark until 1976 when Royal Worcester, Spode and Palissy came under common ownership.

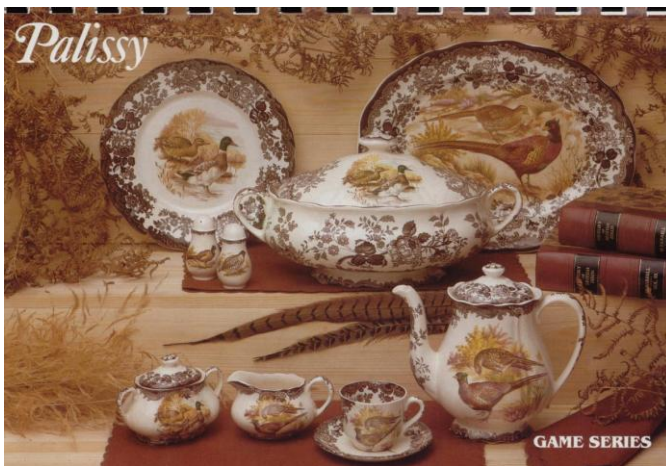


1976 to 1986.



1980 to 1989.

Palissy continued to make the popular Games Series and Avon Scenes until the 1980s.



Other ranges made in the 1980s included bone china tea and coffee sets in Tapestry Rose, Wild Rose, Felicity and Annabel patterns, The Royale Collection of giftware in Victorian Fruit, Jade and Malvern designs and earthenware giftware decorated with the Peony, Blue Celeste, Foxglove, Blackberry and Buttercup patterns and the Twenties Kitchen Collection.

Palissy also made two sets of earthenware wall plates with modelled borders, one set of four English Birds and a set of four Hunting Scenes.

The Palissy factory was closed in 1989. Unfortunately the whereabouts of the factory records is not known and therefore it is difficult to trace individual patterns.

Copyright 2009 Worcester Porcelain Museum

The Worcester Porcelain Museum

Severn Street, Worcester WR1 2ND

Telephone +44 (0)1905 21247

e-mail: info.admin@Worcesterporcelainmuseum.org

Registered Charity No.223753