

Royal Worcester Factory Marks

used on bone china from 1862 to 2006

The Worcester Royal Porcelain Co. Ltd. was formed in 1862. Over the years factory marking of pieces has evolved and although marks vary from impressed and hand written to printed emblems, the majority of bone china produced was marked in the way described below.

The standard printed factory mark, included the number 51 in the centre that refers to the year 1751 when the Worcester Porcelain Company was founded by Dr. John Wall. The mark can appear in any colour, and on a variety of materials.

The marks almost always included a code to indicate the year of manufacture.

Between 1862 and 1875 specific indications of the year of manufacture are rare but may sometimes be found in the form of the last two figures of the date, e.g. 75 for 1875, printed below the standard mark.



1882

From 1867 a letter system was also used to indicate the year of manufacture. From 1876 the crown sits down to fit the circle.

A = 1867	K = 1875	U = 1883
B = 1868	L = 1876	V = 1884
C = 1869	M = 1877	W = 1885
D = 1870	N = 1878	X = 1886
E = 1871	P = 1879	Y = 1887
G = 1872	R = 1880	Z = 1888
H = 1873	S = 1881	O = 1889
I = 1874	T = 1882	a = 1890

From 1891 pieces were coded with a system of dots and/or symbols with the addition of the words 'ROYAL WORCESTER ENGLAND'.

1891 'ROYAL WORCESTER ENGLAND' added

1892 One dot

1893 Two dots

1894 Three dots

1892



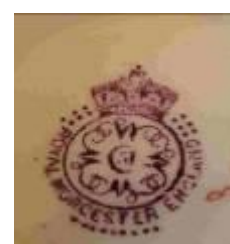
1899



1901



1912



standard printed mark.

From 1916 a small star or asterisk appears below the mark.

- 1916 * below the mark
- 1917 * and one dot
- 1918 * and two dots

An extra dot was added each year until 1927 when 11 dots are arranged around the standard printed mark.

1919



1934



- 1928 Oblong shape & the words MADE IN ENGLAND added
 - 1929 Diamond shape & MADE IN ENGLAND
 - 1930 Division mark & MADE IN ENGLAND
 - 1931 Two circles & MADE IN ENGLAND
 - 1932 Three circles & MADE IN ENGLAND
 - 1933 Three circles & 1 dot & MADE IN ENGLAND
 - 1934 Three circles & 2 dots & MADE IN ENGLAND
 - 1935 Three circles & 3 dots & MADE IN ENGLAND
- This continued until 1941 when there were 9 dots and the triple circle mark.

1942 - 48

Between 1942 and 1948 no date code was used in the mark.



1949



- 1949 the letter V was introduced,
- 1950 the letter W
- 1951 the letter W . (with one dot)
- 1952 the letter W .. (with 2 dots)
- 1953 the letter W ... (with 3 dots)
- 1954 the letter W (with 4 dots)
- 1955 the letter W (with 5 dots)

1956 the letter W or R in a circle(with 6 dots)

1956



1967



This series of codes continued until the 1960s when the dots are arranged around the R (signifying registered) in a circle.

From 1966 the date coding system was rarely used.

From the mid 1960s, a different format of factory stamp was also adopted for bone china tableware. The date included is the year of introduction of the design, not the date of manufacture.



In April 1988 a system of year of manufacture identification that fitted with that used by Spode was introduced and an M within a diamond was incorporated below the factory mark. In January 1989 new factory stamps were used with an N in a diamond under the mark. Soon afterward black numbers were introduced to identify the lithographer. These numbers were replaced with grey ones in August to reduce their visual impact.



In 1990 all factory stamps reverted to the R in a circle under the mark. A printed grey lithographer identification number (eg.39) was used, plus a suffix to signify the year of manufacture.

Printed in grey

- 39 - 0 = 1990
- 39 - 1 = 1991
- 39 - 2 = 1992
- 39 - 3 = 1993
- 39 - 4 = 1994
- 39 - 5 = 1995
- 39 - 6 = 1996
- 39 - 7 = 1997
- 39 - 8 = 1998
- 39 - 9 = 1999

Printed in white

- 39 - 00 = 2000
- 39 - 01 = 2001
- 39 - 02 = 2002
- 39 - 03 = 2003
- 39 - 04 = 2004
- 39 - 05 = 2005
- 39 - 06 = 2006



In the 1980s and 1990s some ranges of decorative pieces such as collectors plates and figurines were printed with very elaborate marks that include designers names, issue numbers and series names. A huge variety of marks were used and most are self explanatory.

Vitreous 1909



Other materials – Since the 1880s separate systems of marks have been used for items made of earthenware (crownware) and Royal Worcester Vitreous. These sometimes follow the same dot code system, but hard porcelain rarely has any code and is therefore much more difficult to identify.

Crownware 1929



Porcelain 1960s



Porcelain Lab ware 1920s – 70s



Copyright 2009 Worcester Porcelain Museum

The Worcester Porcelain Museum

Severn Street, Worcester WR1 2ND

Telephone +44 (0)1905 21247

e-mail: info.admin@Worcesterporcelainmuseum.org

Registered Charity No.223753